

Question (3): (A): Correct the following code:

1. To adjust the property (ForeColor) of control text Label1 to the value Red :

`ForeColor Label1 = Red` `Label1.ForeColor = Color.Red`

2. To adjust the property (Font) of control text Bt_Title to the Font type "Arial" and size (10):

`Bt_Title.Font = New Font ("Arial", 10)`

(B): Correct the following sentences:

Start

1. The effect of the property WindowState does not appear until we (Stop) Debugging.

BackColor

2. To adjust the background color of the Form use property (ForeColor).

(GOOD LUCK)

Question (1): Put \checkmark or \times in:

1. RadioButton is used to allow user to choose more than one alternative.
2. Any geometric shape can be used to represent the solution steps in flowcharts.
3. On saving the Project for the first time solution name is identical to project name.
4. Object name in Id_Title.Visible = True is Visible.
5. There are common properties between control tools and others.
6. Rectangle symbol represents only one operation process.

(B) Write the scientific term for the following sentences:

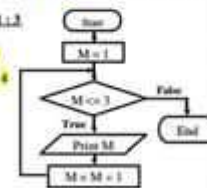
1. A graphical representation that is based on standard graphic symbols, [Flow chart]
2. Through which commands and instructions (code) are written in Visual Basic, Net language [Code window]

Question (2): (A) Underline the correct answer from between in brackets: (Answer six marks)

1. _____ is a set of procedures logically arranged and executed to reach a specific goal or result from specific data. (Pyroblem - Problem solving - Algorithm)
2. _____ is the basic construction unit in object oriented programming languages. (Class - Object - Label)
3. The Framework consists of _____ and other elements. (ToolBox - IDE - Containers)
4. The name that refers to the Form in the code _____ (BackColor - Name - Text)
5. _____ allows TextBox control tool to have multiple lines. (MultiLine - Size - Font)
6. Project can run in test mode by pressing a key _____ from the keyboard. (F5 - F8 - F2)
7. _____ is used in displaying of a list of items. (Listbox - CheckBox - Groupbox)

(B) In the flowchart to print the numbers from 1 to 5

1. How many times the loop is executed _____ 5
2. What is the value of M after the end of loop _____ 6

Question (1): Put \checkmark or \times in:

1. Event handler is the procedure that is called when a certain event occurs.
2. Debugging mode is turned off using Icon Stop Debugging.
3. Properties vary according to the active element in the IDE screen.
4. Algorithm is the first stages of problem solving.
5. There are no common properties between one Control tool and another.
6. Iterations and branching can be represented through Flowchart.

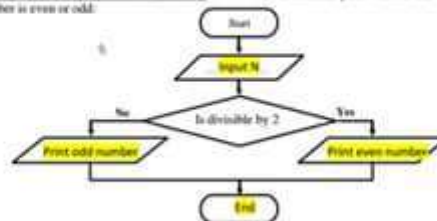
Question (2): Choose the correct answer from the brackets for the following:

1. To open the code window of the Form window press the key _____ (F4 - F5 - F3)
2. _____ contains control tools that can be placed on the form window. (ToolBox - Properties - Solution explorer)
3. To allow the choosing one only element, we use the control tool _____ (RadioButton - CheckBox - GroupBox)
4. Which of the following properties takes effect only upon Start Debugging _____ (Show in taskbar - Font - text)
5. Integrated development environment means _____ (IDE - IDE - IPO)
6. To set the background color of the Form window use property _____ (ForeColor - BackColor - Color)

Question (3): Complete the following sentences:

1. An objective or output result we want to attain the problem
2. When saving the Project for the first time, solution name is identical to project name
3. When the value of property Auto Size is set to true the size of control tool Label is set according to the text appearing on it.
4. Class is defined as the basic building unit in object orientation programming languages and is created from class.

Question (4): Complete the Flowchart by: once a number and then print whether the number is even or odd:



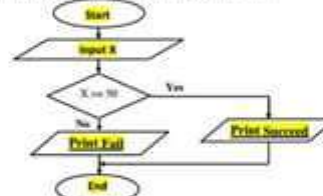
Question (13): Fill in the blank (1 for 1 = 5)

1. Preparing the solution steps (algorithm) is the first stage of problem solving. (3)
2. There are common properties among the control tools. (3)
3. The code written to hide the control tool Label1 is Label1.Visible = true. (3)
4. Number of variables used in flowchart to input two numbers and print the sum is 2. (3)
5. The **Process** shape is used for processing operation in the flowchart. (3)

Question (14): Choose the correct answer between brackets.

1. Object that upon which controls are placed (the Controls) and is used as program interface is called **Form** - Application - Visual Basic.
2. Object name can be changed from the **Properties** window (properties - tools - Form).
3. The code window is opened by pressing the key **Ctrl + F4** - **F7**.
4. To save project in Visual Basic.Net Select command **Save** from the File menu (**Save** - Save As - Save).
5. The Blueprint from which object is created is called **Class** - Label1 - Form.

Question (15): Complete the Flow Chart by entering the value of X, and if X >= 50 print the word "Success" and if it is less than 50 print "Fail".



Question (16): Select from column (A) what suits it from column (B):

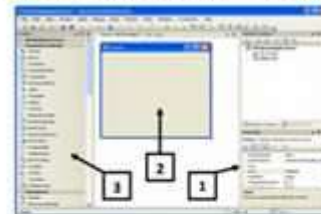
(A)		(B)
1. The procedure, which is called upon the occurrence of a certain event.	(3)	a. Radio Button
2. The property that changes the color of text written on the tool.	(1)	b. Event Handler
3. The tool used to select only one alternative of several alternatives.	(4)	c. Text
4. The property that changes the text written on the tool.	(5)	d. ShowTaskbar
5. The property that takes effect on start debugging.	(2)	e. ForeColor

(GOOD LUCK)

8

Question (17): (A): In the shown figure write down what the following number indicates:

1. **Properties Window**
2. **Form Window**
3. **Tool Box**



(B): Write the scientific term for the following:

1. Property that sets the height and width Button tool on the form window. **Size**
2. A tool used to contain the control tools of the same function on the Form window. **Group Box**

(GOOD LUCK)

8

1. Property Sorted determines whether the items are

- 00000000

1. After the finishing the **Flowchart** we translate it into one of the programming languages

-

--	--

```

graph TD
    1([1]) --> 2[/2/]
    2 --> 3[3]
    3 --> 4[/4/]
    4 --> 5([5])
  
```

- 0000

1. Form is the window/canvas interface

- the

(= =)

- ing CE

Year	2000	2001	2002
2000	2000	2000	2000
2001	2001	2001	2001
2002	2002	2002	2002

ii) Draw a flowchart for calculating the number of years knowing number of months.

A diagram of a parallel plate capacitor. Two horizontal parallel plates are shown. The top plate is connected to a positive terminal, indicated by a '+' sign. The bottom plate is connected to a negative terminal, indicated by a '-' sign. A dielectric slab, represented by a rectangle with diagonal lines, is inserted between the plates. The slab is labeled 'dielectric'.



Question (1): First, Choose the correct answer between brackets:

1. _____ is used to contain control tools of the same function on the Form window.
(Class - **GroupBox** - ListBox - Item)
2. Solution Explorer window contains _____ (Properties - Control tools - **Forms** - all of the previous)
3. The event handler name consists of _____ (Control tool Name - The event name - **The control tool name and the event name** - none of the previous)
4. Integrated Development Environment means _____ (IPG - IPG - **IDE** - IED)

Second: Put the appropriate tool name from the following tools in the right place in the table:

(TextFile - RadioButton - CheckBox - ComboBox - ListBox - Label)

Image	<input checked="" type="checkbox"/> English <input checked="" type="checkbox"/> French	<input type="text"/>	<input type="radio"/> Arab <input type="radio"/> Urdu <input type="radio"/> Hindi <input type="radio"/> Persian	<input checked="" type="radio"/> Male <input type="radio"/> Female
Tool name	(1) CheckBox	(2) TextFile	(3) ComboBox	(4) RadioButton

Question (2): First: Rewrite the following sentences after converting the underlined:

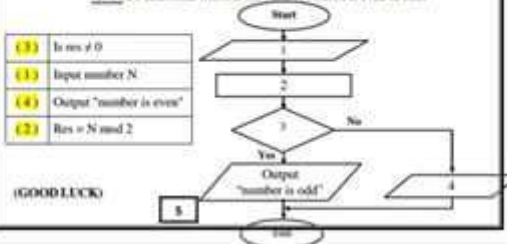
1. To open the code window Code Windows of the Form window press [F5] key. **Alt**
2. **Program design** is the first stages of solving the problem. **Define the problem**
3. Property **Is3** indicates whether the RadioButton is selected or not. **IsSelected**
4. The Blueprint from which objects are created from is called **Form**. **Form**

Second: You have some properties of the control tool Label:

Change it programmatically to the values shown:

Property	Required Value	Code
ForeColor	Blue	Label1.ForeColor = Color.Blue
Text	Egypt	Label1.Text = "Egypt"

Question (3): Write inside each symbol of Flowchart what suits it from the apposite table: To determine whether the number entered is even or odd:



First Question: Put (V) for true:

1. Testing program and correcting errors is the fourth step of problem solving. **(V)**
2. VB.Net language is not object oriented programming language. **(X)**
3. Windows application has a graphical user interface (GUI). **(V)**
4. Each object has properties and events and methods. **(V)**
5. To hide the control box of the Form select the value True for the property ControlBox. **(X)**

Second Question: You have unordered steps of program to calculate the interest value calculated for the balance (at specified interest rate):

Required:

First: Rearrange the previous steps.

Second: Draw flow chart for this program.

- Interest = Balance * Rate **3**
 End **5**
 Read Name, Balance, Rate **2**
 Output Name, Balance, Interest **4**
 START **1**



Third Question: Write down each of the following:

1. The components of the Framework. **CLR - System Class Library - Compiler - other tools**
2. IDE screen components. **Form - Properties - Solution Explorer - Tool Box**
3. How to save the project on the storage media. **Open file menu and choose Save As**

Fourth Question: Choose the correct answer between brackets in the following:

1. The procedure, which is called when a certain event occurs _____ (Code Window - **Event Handler** - CheckBox)
2. A control tools that can be placed on the form window and the user program can click on it to execute a certain action _____ (ComboBox - **Button** - ListBox)
3. To control the size of Label control tool using the mouse, set the property _____ (**AutoSize** - Location - BorderStyle)
4. The tool used to input text data to the program _____ (RadioButton - GroupBox - **TextFile**)
5. The plan from which objects are created from _____ (Object - **Class** - Flow Chart)

(GOOD LUCK)

Question (1): Write the scientific concept:

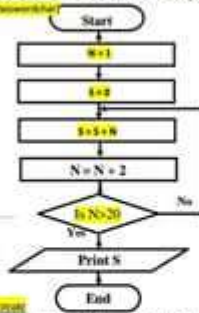
1. A window that is used to view and change the properties of controls. **(Properties window)**
2. A group of logically arranged procedures to be executed to attain a goal or precise output, out of specific inputs. **(Algorithm)**
3. The procedure that is called when an event occurs. **(Event handler)**

B) Mention the reason:

1. Any Programming language contains a computer. **Because converting human language to machine language**
2. When the user was trying to input the number (2015) into the textbox tool, these symbols (****) displayed instead. **Because used property (PasswordChar)**

Question (2): A) Fill the empty shapes of the flow chart with suitable:

- Is N > 20
- N = 1
- S = S + N
- S = 0



B) The purpose of the flow chart is:

Print the sum of odd numbers from 1 To 20

Question (3): Complete the following sentences:

1. Class is **blueprint / plan / template** which the object is created.
2. A **radio button** control is used to select one option from a group of mutually exclusive options.
3. Control Name Property = **Value**
4. A **list box** control is used to display a list of items.
5. The code window of the control is written between private sub and **End Sub**.

Question (4): Select from group (B) the appropriate one to the other in group (A):

Group (A)	Group (B)
1. A drop-down list from which no item can be selected.	ComboBox
2. The window which is used to design the (visible interface) of the application.	Form
3. A user can click on it to perform a specific task.	Button
4. A control that users cannot type in (any text) during the run-time.	Label
5. The property which is used to hide the textbox.	Visible
	Form
	Hide

(GOOD LUCK)

- a- ShowInTaskbar
 - b- Location
 - c- **PasswordChar**
 - d- ReadOnly
4. The project can run in start debugging mode by pressing _____ from the keyboard.
a- F2 b- F4 c- F7 d- **F8**
 5. The value assigned to property may have several types:
a- The abstract value c- The value of a variable or property
b- The logical value d- **All of the above**
 6. Some advantages for the Flowchart:
a- Facilitate the programmer writing program.
b- Useful in explaining the program to other.
c- Provide better documentation for the program.
d- **All of the above**

(GOOD LUCK)

Question (1): Put (✓) or (X):

1. To open the code window pressing the F4 key on your keyboard. **(X)**
2. Operating environment CLR is one of .Net Framework components. **(✓)**
3. Label1.Visible = True code used to show Label1 tool. **(✓)**
4. Testing program and correcting errors is the last stage of solving the problem. **(X)**
5. There must be a value for any property. **(✓)**

Question (2): Write what each of the following statements refers to:

1. Control tool that has the property PasswordChar. **Textbox**
2. A set of procedures logically arranged that are executed to reach a specific objective. **Algorithm**
3. It contains control tools that can be placed on the Form window. **Tool Box**
4. The procedure called when a certain event occurs. **Event Handler**

Question (3): Choose from column A what suits from column B:

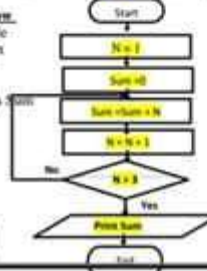
- | | |
|--|------------------|
| A | B |
| 1. A property with effect that does not appear until Start Debugging. (2) | a. List Box |
| 2. A tool used to display a list of elements. (3) | b. Project |
| 3. The menu from which a new Form is added to the project. (4) | c. Flowchart |
| 4. Iterations and branching can be represented using (1) | d. StartPosition |

Question (4): Complete the spaces of the flow chart:

to print the Sum of whole numbers from 1 to 3 and correct the chart:

Assuming that the number is N and the total is sum:

**N = 3
Sum = 6**



(GOOD LUCK)

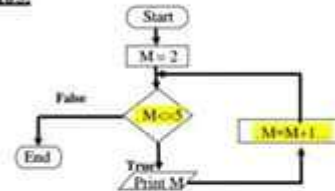
(1) CAIRO GOVERNORATE 2014 - 2015

Question (1): (A), Put (✓) or (x):

1. Flowchart can be drawn using software only and can't be drawn on paper. (x)
2. The statement is written (Lbl_Title.Font = Font("arial",30)) to adjust the property (Font) for (Lbl_Title). (x)
3. Can the user not choose any item in the CheckBox control. (x)
4. When you create a new project, a copy of the project is saved in the memory and one of the storage devices automatically. (x)
5. In IDE screen, displayed properties differ upon the selected element. (x)
6. The effect of all the properties appears during design mode. (x)

Question (2): Complete draw a Flowchart to:

print the numbers from 2 To 5:



• In the previous Flowchart:

- How many times was the content of the loop executed = 4
- What will be the value of (M) after the loop executed = 6

Question (3): Write the scientific term for each of the following statements:

1. (Programming Language) is a set of instructions and commands are written according to certain rules and then translated to machine Language to execute.
2. (Define the problem) is defined the required outputs, available inputs and the processing operations.
3. (Class) is the blueprint, from which the individual objects are created.
4. (Event Handler) The procedure called into action when an event occurs.

Question (4): Underline the correct answer:

1. To hide the minimize and maximize buttons for the Form (Form1) set value (False) for

- a- MinimizeBox
- b- MaximizeBox
- c- Both a & b
- d- ControlBox

2. To change the size of the Label1 control manually make the value of the property equal to False.

- a- AutoSize
- b- Size
- c- Location
- d- BorderStyle

3. The Property specifies the symbol that will be displayed instead of the written in TextBox.